

PLAT NO. 10A SAILFISH POINT P.U.D.

BEING A REPLAT OF PLAT NO. 10 SAILFISH POINT
P.U.D. RECORDED IN PLAT BOOK 9, PAGE 73
LYING IN FRACTIONAL SECTION 8,
TOWNSHIP 38 SOUTH, RANGE 42 EAST
MARTIN COUNTY, FLORIDA

OCTOBER, 1986

SHEET 2 OF 2

Marsha Stiller
I, *Marsha Stiller*,
Clerk of the Circuit
Court of Martin County,
Florida, hereby certify
that this Plat was filed
for record in Plat Book
10, Page 56, Martin
County, Florida, Public
Records, this day
of *1986*.
Marsha Stiller
Clerk
Circuit Court
Martin County, Florida
By: _____
Deputy Clerk
File No. _____
(Circuit Court Seal)

Bearing Base

All bearings shown hereon are relative to the bearings shown on Plat No. 1 Sailfish Point P.U.D., Plat Book 8, Page 10.

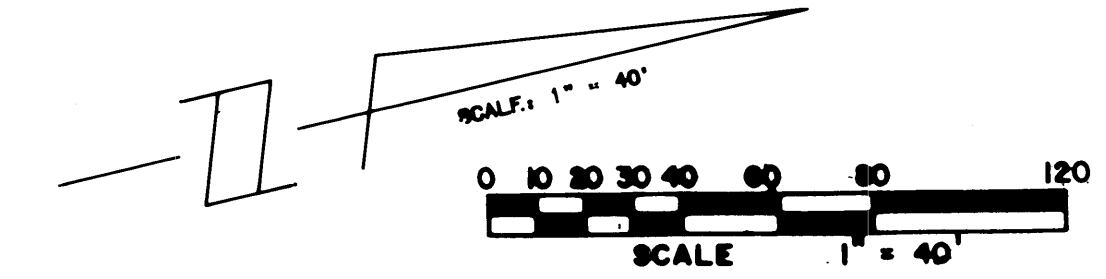
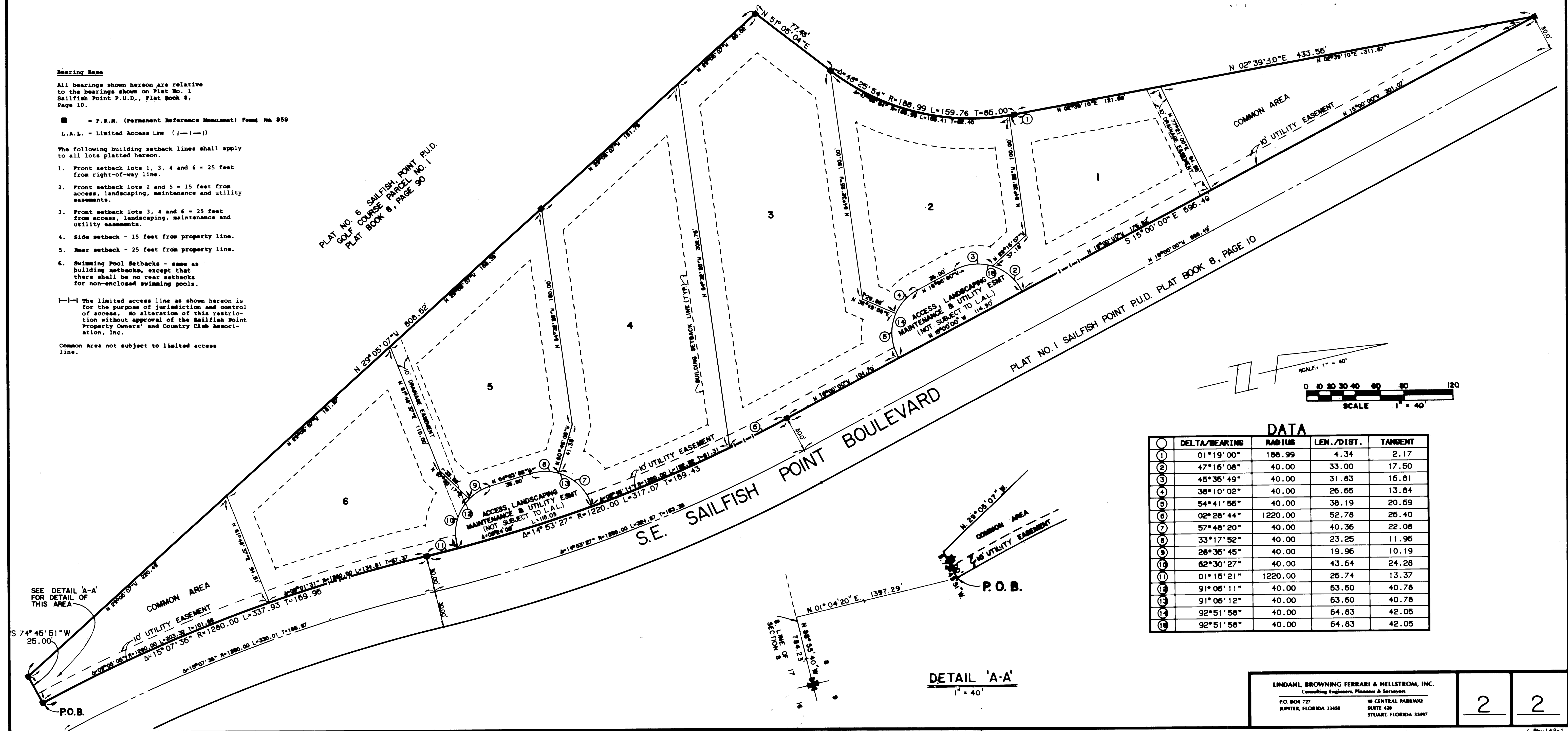
■ = P.R.M. (Permanent Reference Monument) Found No. 859
L.A.L. = Limited Access Line (---|---)

The following building setback lines shall apply to all lots platted hereon.

1. Front setback lots 1, 3, 4 and 6 = 25 feet from right-of-way line.
2. Front setback lots 2 and 5 = 15 feet from access, landscaping, maintenance and utility easements.
3. Front setback lots 3, 4 and 6 = 25 feet from access, landscaping, maintenance and utility easements.
4. Side setback - 15 feet from property line.
5. Rear setback - 25 feet from property line.
6. Swimming Pool Setbacks - same as building setbacks, except that there shall be no rear setbacks for non-enclosed swimming pools.

---|--- The limited access line as shown hereon is for the purpose of jurisdiction and control of access. No alteration of this restriction without approval of the Sailfish Point Property Owners' and Country Club Association, Inc.

Common Area not subject to limited access line.



DATA

NO.	DELTA/BEARING	RADIUS	LEN./DIST.	TANGENT
1	01°19'00"	186.99	4.34	2.17
2	47°16'06"	40.00	33.00	17.50
3	45°36'49"	40.00	31.83	16.81
4	36°10'02"	40.00	26.65	13.84
5	54°41'56"	40.00	38.19	20.69
6	02°28'44"	1220.00	52.78	26.40
7	57°48'20"	40.00	40.36	22.08
8	33°17'52"	40.00	23.25	11.96
9	28°36'45"	40.00	19.96	10.19
10	62°30'27"	40.00	43.64	24.28
11	01°15'21"	1220.00	26.74	13.37
12	91°06'11"	40.00	63.60	40.78
13	91°06'12"	40.00	63.60	40.78
14	92°51'58"	40.00	64.83	42.05
15	92°51'58"	40.00	64.83	42.05

LINDAHL, BROWNING FERRARI & HELLSTROM, INC.
Consulting Engineers, Planners & Surveyors
P.O. BOX 727
JUPITER, FLORIDA 33458

18 CENTRAL PARKWAY
SUITE 430
STUART, FLORIDA 33997

2 2